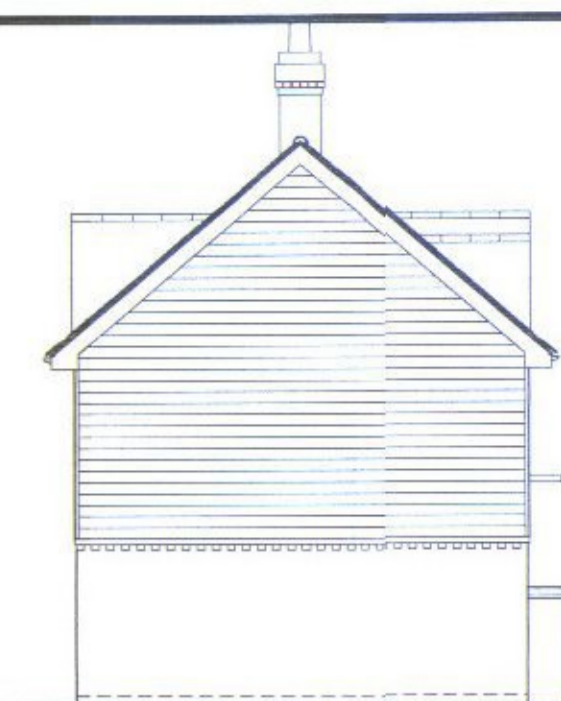
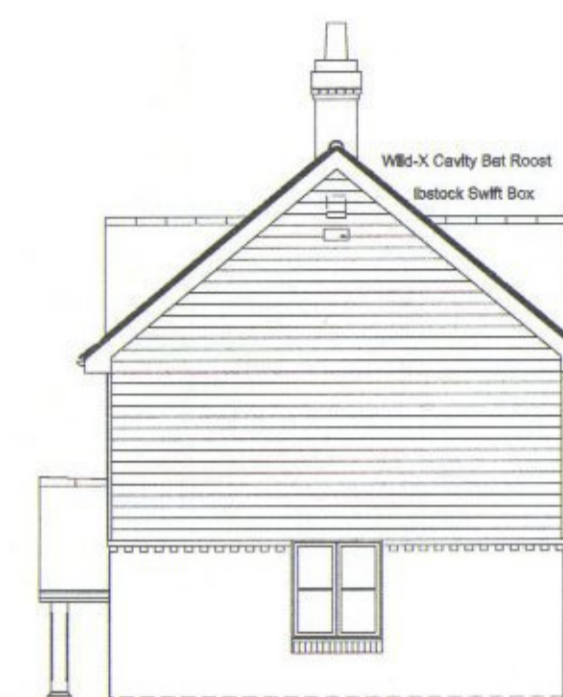




FRONT ELEVATION



LHS FLANK ELEVATION

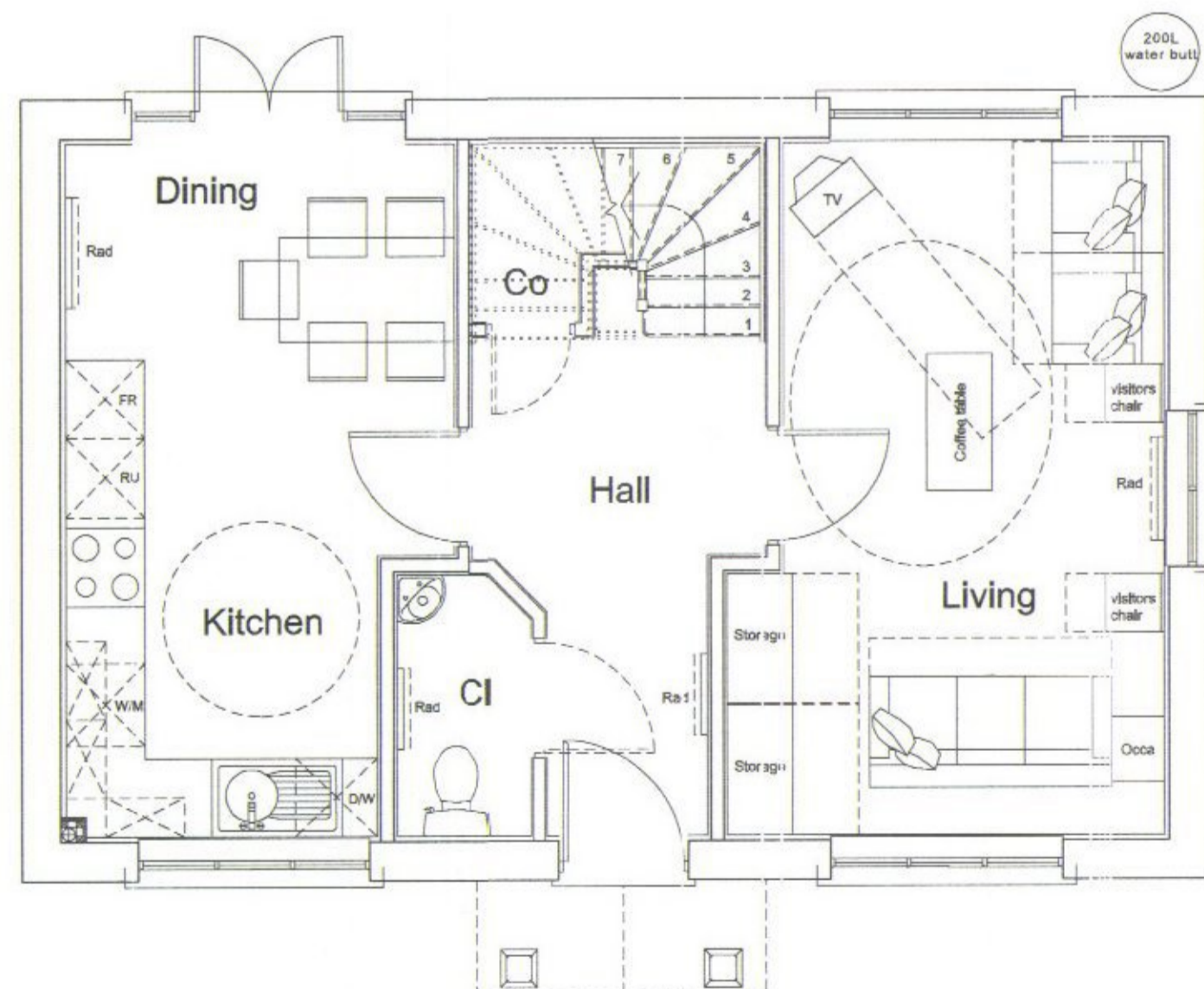


RHS FLANK ELEVATION



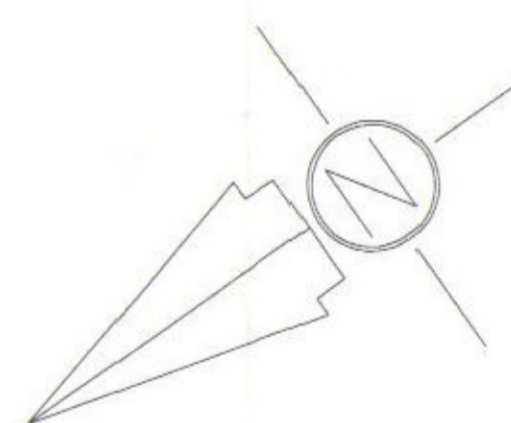
REAR ELEVATION

13 / 01030

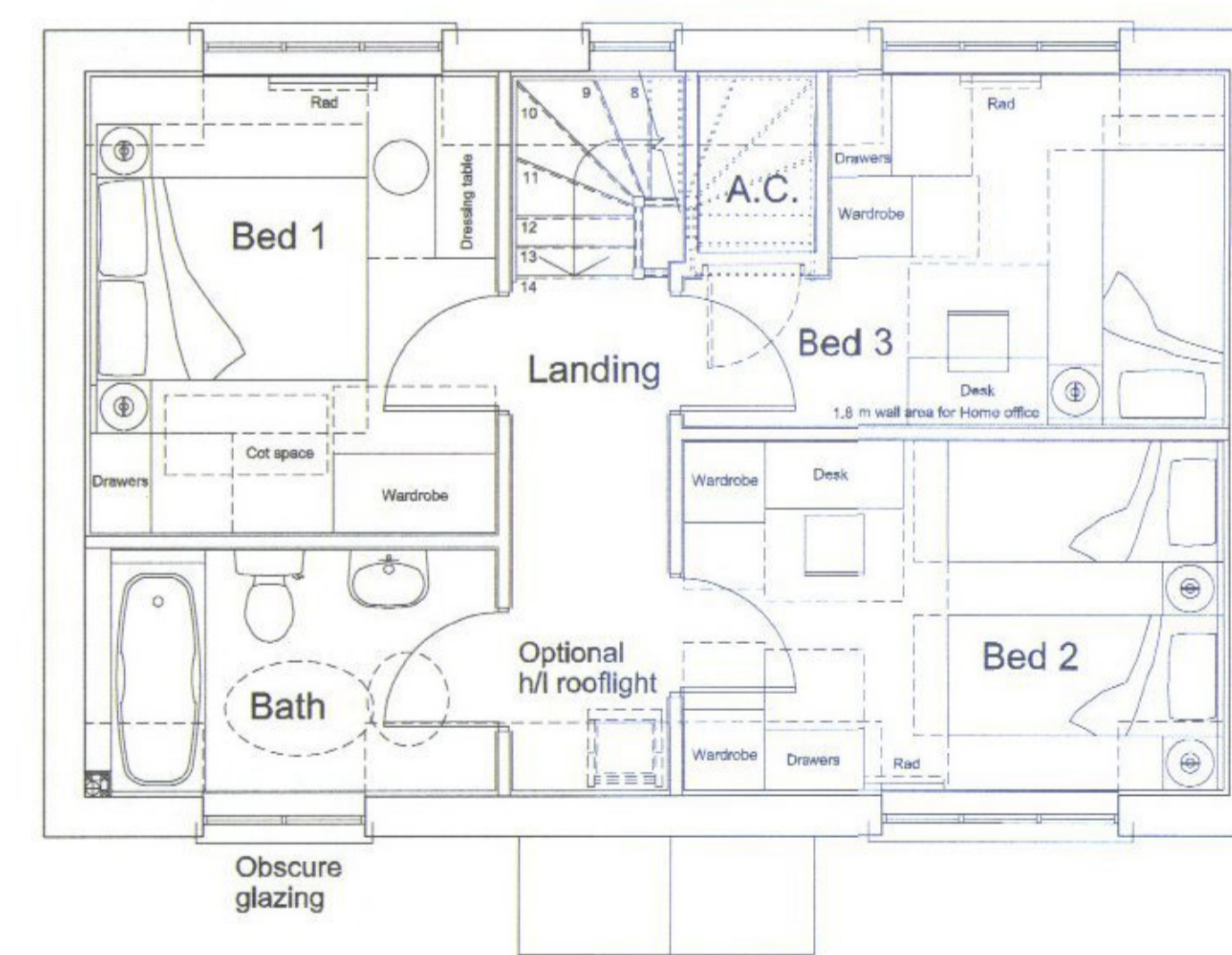


GROUND FLOOR

**Materials:**  
 Roof: Tiles to match surroundings  
 Walls: Selected stock facing bricks / timber cladding  
 Fenestration: selected casement windows and french doors to be white



**Net internal finished floor areas Plot 1:**  
 Ground floor: 44.5sqm  
 First floor: 44.5sqm  
 Total: 89.0sqm



FIRST FLOOR

Notes / Revisions  
 Revision A: Minor amendments for planning submission  
 Revision B: Bat and bird boxes added to RHS flank elevation

david parker  
**architects**

The Old Brewery Tap  
 3 Shirburn Street  
 Watlington  
 Oxfordshire OX49 5BU

Tel: 01491 613066  
 Fax: 01491 614017  
 Email: mail@dparchitects.co.uk  
 Web: www.dparchitects.co.uk



Client  
**VAHT**  
 Project  
**RESIDENTIAL DEVELOPMENT**

Status  
**PLANNING**

Location  
**LAND ADJACENT THE VILLAGE HALL, BUCKINGHAM ROAD, EDGCOTT**

Drawing Title  
**DETAILED PLANS AND ELEVATIONS**

Drawn By  
 JKC

Scale  
 1:50

Date  
 12.03.13

Dwg N  
**13-VAV-PE01**

Rev  
**B**

07.05.13

