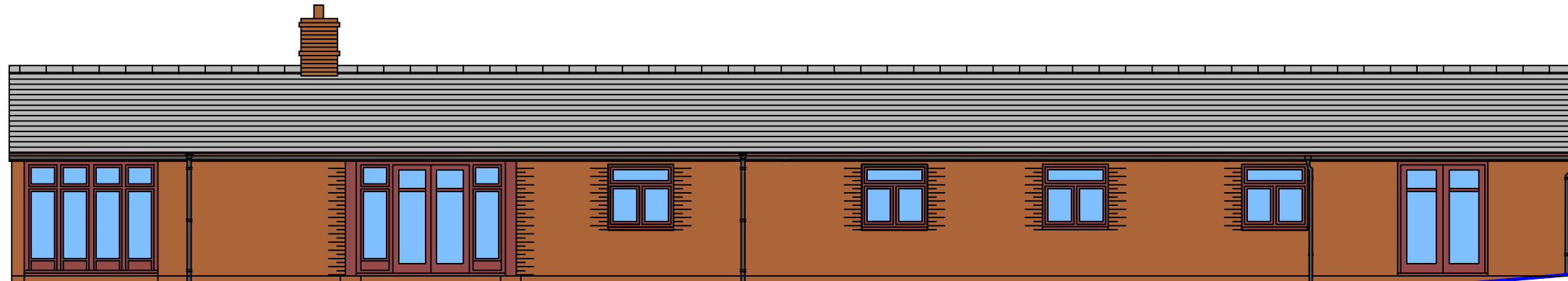




NE FRONT ELEVATION



SW REAR ELEVATION

Revisions: Description: Revisions Date:

**AB Planning & Development Limited**

46A Common Road, North Leigh, Witney, Oxfordshire, OX29 6RB  
 T&F: +44(0)1993 880 680 E: andy@abplanninganddevelopment.co.uk  
 M: +44(0)7720 979 630 W: www.abplanninganddevelopment.co.uk

Client  
**Culley**

Project  
 The Old Dairy Block, Foscott Wood Farm,  
 Leckhamstead Road, Foscot, near  
 Buckingham, Buckinghamshire

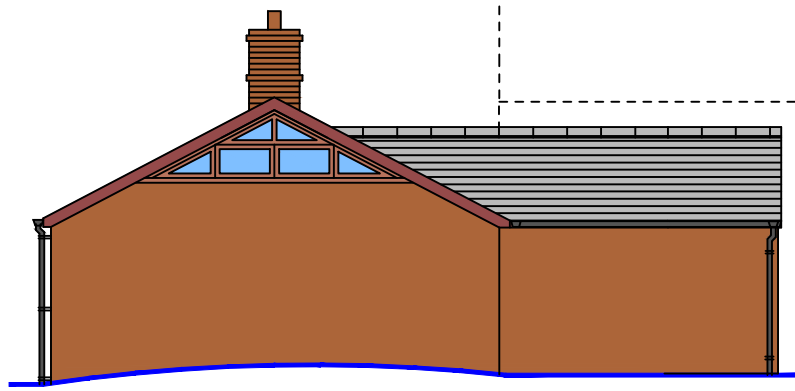
Title  
 Proposed elevations of converted &  
 extended former barn

Status: Application Submission  
 Date: December 2012 Scale: 1:100 @ A3

Checked by:	Job no.	Dwg.no.	Rev.
AKB	ABC0001	400-03	-

Outline of Foxmere Barn in background

Outline of Foxmere Barn in foreground



SE SIDE ELEVATION



NW SIDE ELEVATION